

# 2-WAY DUCTILE IRON VALVE



## YFF-2000 series

### Application

Used as a control or blocking valve in heating, ventilation, air conditioning system & domestic water facilities.

- Temperature range : -25 ~ 160°C.
- Applicable fluid : Cold & Hot water, Steam(Max 2.0Kgf/cm<sup>2</sup>)

### Technical Data

Valves					Close-Off Rating(Max,ΔP(kgf/cm <sup>2</sup> ))			
Valve Size (A)	Type Reference	Cv	Max. Pressure (kgf/cm <sup>2</sup> )	Lift (mm)	YGC(D) Actuator Series			
					41	51	61	71
15	YFF-2015	4.7	16	20	10	15	-	-
20	YFF-2020	7.0	16	20	8.7	15	-	-
25	YFF-2025	11.7	16	20	8	15	-	-
32	YFF-2032	18.7	16	20	5	13	-	-
40	YFF-2040	29	16	20	3.5	12	-	-
50	YFF-2050	47	16	20	3	7.2	-	-
65	YFF-2065	68	16	40	-	5	13	-
80	YFF-2080	91	16	40	-	3.5	12	-
100	YFF-2100	150	16	40	-	3	7	-
125	YFF-2125	237	16	40	-	1.5	4.4	-
150	YFF-2150	344	16	40	-	1	3	6.8

- Max .Pressure(kgf/cm<sup>2</sup>)=Maximum pressure in a opened or closed valve.
- Max, ΔP(kgf/cm<sup>2</sup>)=Maximum differential pressure in a closed valve.
- Water : Range ability 90%, Valve size is 1 step increased when flow velocity is above 3m/s.  
Steam : Range ability 55%, Valve size is 1 step increased when flow velocity is above 10m/s.
- Accessories : Coupling nuts, Rings, Adaptors.

**Technical Data**

• End Connection	: RF Flange
• Valve Body Rating	: KS 16Kgf/cm2
• Leakage	: 0.01% Valve capacity at full travel ANSI B 16.104-1976 ClassIV
• Flow Characteristics	: Equal Percentage
• Range Ability	: 30:1
• Recommended Actuator	: YGC(D)-41, YGC(D)-51, YGC(D)-61, YGC(D)-71
Body	: Ductile Iron (GCD45)
Bonnet	: Ductile Iron (GCD45)
Stem	: STS304, STS410
• Materials	
Plug	: STS304
Seat-Ring	: SSC14A
Packing Box	: Spring loaded PTFE and Elastomer V-ring

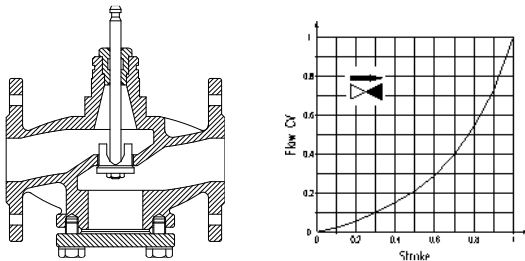
**Design characteristics**

Valve & controller are provided separately, and the assembly does not require special tools or modification. Valve body material is made of Ductile Iron, and the Stem, Seat-ring & Plug material are of Stainless steel(see the Valve structure & Fluid direction figures).

Plug shape is divided into Parabolic(P), Profile(V), etc. according to the valve size & unique range ability, and Perforate shape is also available in an unstable condition such as cavitation.

1) Valve Design characteristics

- Valve stem is decreased : Open
- Valve stem is increased : Close



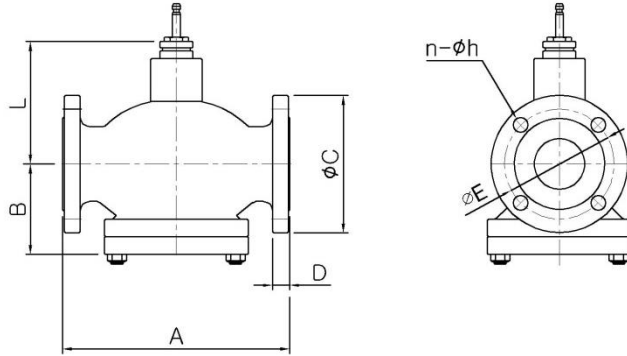
2) Gland sealing box characteristics

- A pair of O-Rings & dust protection strip-attached Sealing Gland.
- Self-adjusting Teflon sleeve-attached Sealing Gland.
- Sealing Gland is changeable without separating the valve.



## 2-WAY DUCTILE IRON VALVE

### Shape Dimension



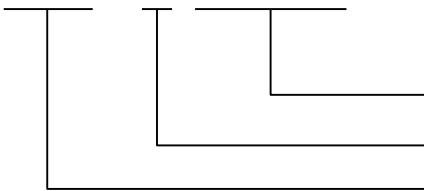
Size(A)	A	B	C	D	E	n-φ h	L	Weight (kg)
15	130	62	95	14	70	4-15	78	6
20	150	62	100	16	75	4-15	78	6
25	160	65	125	16	90	4-19	73	6.9
32	200	89	135	18	100	4-19	76	8.9
40	200	89	140	18	105	4-19	76	10
50	230	102	155	18	120	8-19	119	15
65	290	115	175	20	140	8-19	134	22
80	310	133	200	22	160	8-23	149	25
100	350	158	225	24	185	8-23	172	50
125	400	176	270	26	225	8-25	176	76
150	480	210	305	28	260	12-25	199	87

### Order specifications

Product name & Type are required to be filled with the type appendages when ordering.

Ex) Two-way valve YFF-2065(2000series)

Y □ □ - 2 □ □ □



Valve Size(A) : 15A ~ 150A

Valve Type : 2 -16Kgf/cm2

Product Group : Flange Type